



mater

Catalogue

2023



About Mater	4
Timeline	6
Working with waste	10
Introducing Matek	12
Mater Take-back system	20
Mater furniture news	22
Highlights	40
The SDGs	60
Mater collection	64
Material overview	102
Designers	108
Contact and info	110

About Mater

Founded in Copenhagen in 2006, Mater is a pioneering green-tech design brand with sustainability and circularity at its core.

From the outset, the ambition was to inspire a global design audience and engage people in sustainable thinking. We use cutting-edge technology in production allowing us to transform waste materials into furniture. Through collaboration with well-established and new design talents, we create timeless designs in a sustainable and responsible way.

As a company, we will never stand still. Mater is continuously committed to finding and developing new waste materials and techniques that allow us to create more from less. The future of the planet relies on circular solutions and green innovations, and that's what we work for.

A continuous journey to a more sustainable furniture production

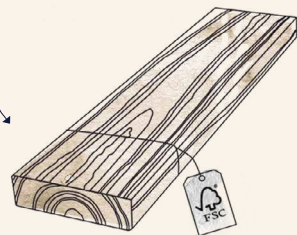
mater

2006

Founded by Henrik Marstrand with an ambition to inspire the global design audience and engage people in sustainable thinking.

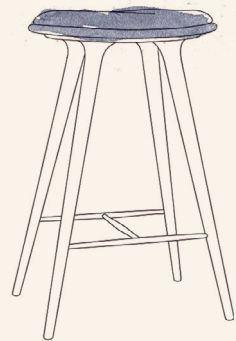
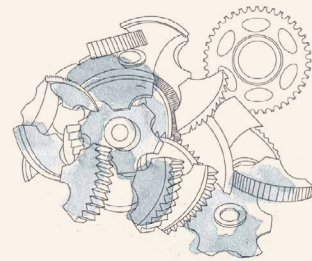
2006

From the outset, our ambition was to use FSC-certified wood in our production. This was fully implemented in 2014. In an FSC® certified forest, no more trees than the forest can reproduce are felled.



2008

Launch of the Mater High Stool in recycled aluminum. 70% of the aluminum comes from recycled old pipes, tubing and other aluminum waste melted and mixed with new material to obtain the silvery expression.



2007

Mater High Stool is launched. Today it's one of our most sold products and is a centerpiece in many hotels, bars and restaurants around the world. It's regarded as a New Danish Classic.

2012

We introduce the Bowl Table made of mango wood. Mango wood is a byproduct of an already thriving industry. When the trees stop bearing fruits, it's cut down, and a new one is planted. Harvesting the wood that was previously burnt or left to break down is a source of sustainable material.



Matek™

2020

In alliance with large corporations, Mater explores new technology that recycles industrial fibre and plastic waste. This results in six new unique patented materials under the name Matek®.

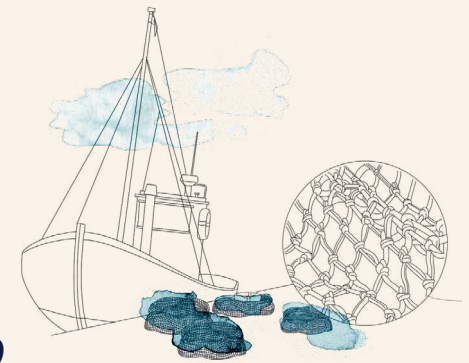
2021

The Ocean Collection is launched in a version of recycled beer kegs from Carlsberg. In line with the circular way of thinking, the OC2 Collection can be found in the outdoor area of Carlsberg's headquarters in Copenhagen.



2019

We start using ocean waste for our outdoor series and injection moulded chairs. Old fishing nets from the ocean are collected, washed, shredded and made into pellets, also known as green plastic.



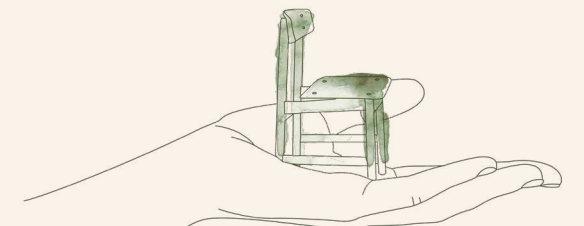
2019

The Ocean collection by Nanna Ditzel is awarded with the Wallpaper* Magazines Design award.



2022

Introducing our Mater Take-back system. We offer to take all furniture made with Matek® back at the end of its life to recycle it into new furniture.





*“We are a green-tech company with the capability to **transform waste into design furniture.**”*

Meet the founder

Rooted in the Danish design tradition, the aim right from the beginning in 2006 was to change how people think of sustainably made furniture. We wanted to inspire consumers and architects worldwide into changing their behaviors. Today, almost all brands in the industry deal with sustainability, FSC certifications, life cycle assessment or even involve themselves in discussions on how to climate compensate their production. But this was not the case when Mater was founded.

The use of FSC-certified wood in our products has been a given right from the start, but Mater has progressed much further since then. We constantly strive to find and develop new ways to push the boundaries of sustainability in furniture manufacturing. From recycling Mango wood and aluminum scraps to recycling discarded fishing nets and now collecting waste from large-scale corporations transforming into our patented materials **Matek**. The materials are a product of cutting-edge green technology and what's exceptional is that they can be processed again and again into new beautiful design pieces. **Matek** is what tomorrow's furniture production looks like, and we believe it will take circularity and the talk of sustainable furniture to a whole new level.

Henrik Marstrand

Founder and Head of Circular Transformation

Working with waste

Using waste material, Mater combines green technology and circular production with timeless design.

We are on a constant journey to find new solutions that will make furniture production more sustainable. We have moved on from being a sustainable design brand to becoming a green-tech company with focus on furniture design – always on the lookout for ways of doing things differently. From working with traditional waste materials to finding methods and technology that allow us to develop innovative and circular materials - never before seen in furniture production.



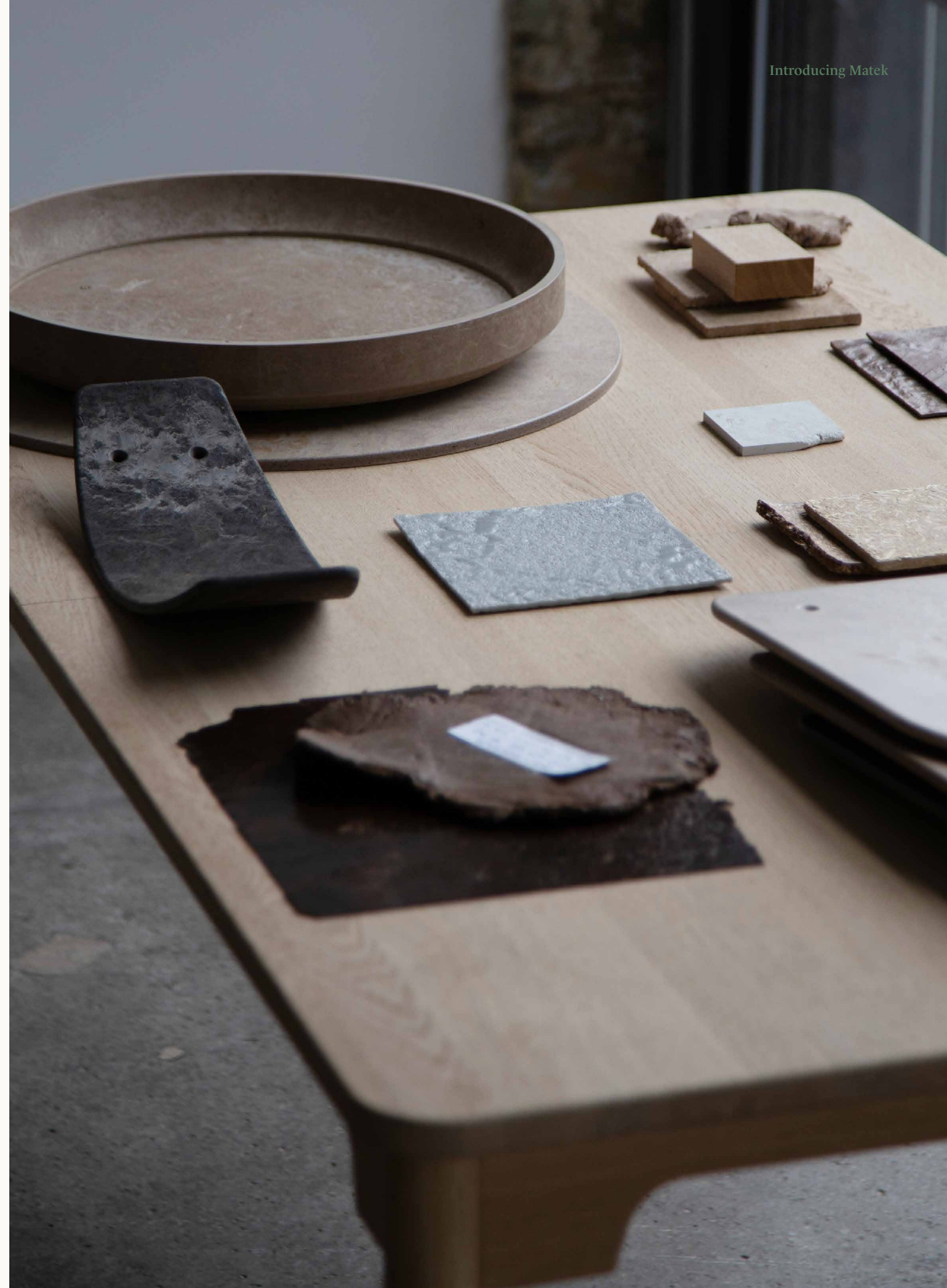
*We strive towards
a waste-neutral future*

Introducing Matek™

Through years of research and testing, we invented Matek.

The uniquely patented materials enable us to make furniture of waste materials by combining fibre with a binder. Coffee bean shells, extracted during the roasting process, are an example of a fibre material. Sawdust from wood production is another. The binder material is made from plastic waste or a plastic-based alternative. The mix of materials results in a unique compound suitable for press moulding.

The technology behind Matek allows us to capture carbon in our furniture by recycling waste into timeless classics using resources already available to us, instead of virgin materials. To produce Matek, we either use post-consumer waste or post-industrial waste available to us through successful collaborations with large-scale corporations. We help process their waste streams and make them suitable for furniture production – beneficial to themselves and others.



In all its simplicity, Matek is made by mixing a fiber material with a binder material

Coffee beans

Roasting coffee beans creates chaff - dried skin that falls off due to the high temperature.



Industrial plastic waste

When industrial manufacturers produce plastic products, large amounts of the mold pieces are discarded from production.



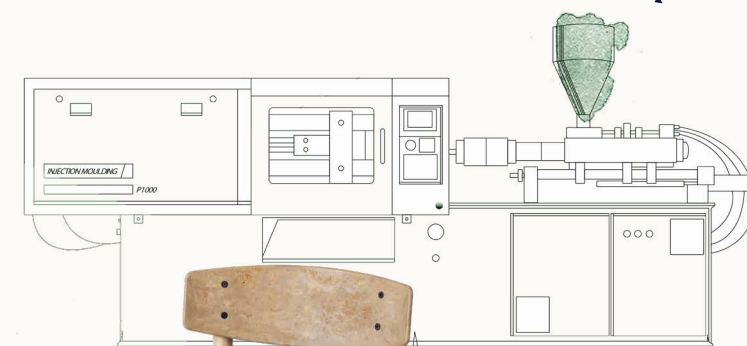
Coffee shell fibres

Coffee waste is a byproduct of the coffee industry but collected, it can be used as a strong fiber for our Matek production.



Plastic granulates

Leftover plastic parts are granulated into small pieces that we can use as a binder material for our Matek production.



Matek™

Mixing the fiber with the binder material creates a unique compound that can be used for press moulding.



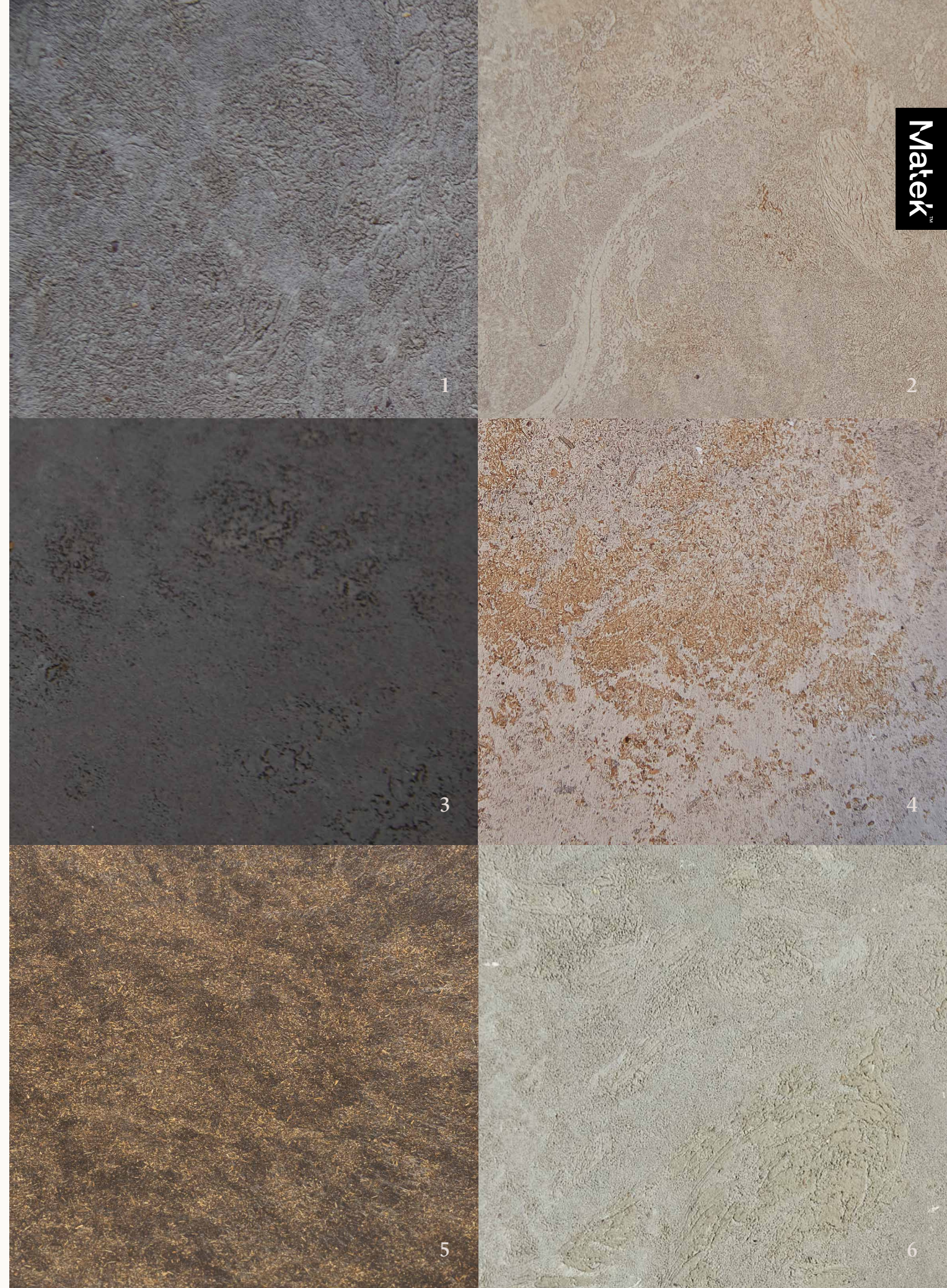
Coffee Waste Light

Six unique materials made from waste

Matek offers an unprecedented unique tactility and materiality with features that resemble timeless materials like stone, terrazzo or even marble. The material is water-repellent and highly durable, and we consider it as a material in line with wood, stone, plastic or any other raw material.

At the moment, we operate with six unique material blends that go under the name **Matek**. In line with our ongoing work and experiments with waste streams, new blends will be added to the collection.

1: Coffee Waste Dark / 2: Coffee Waste Light / 3: Coffee Waste Black
4: Wood Waste Grey / 5: Beer Waste (mask) / 6: Coffee Waste Green



Waste materials we use

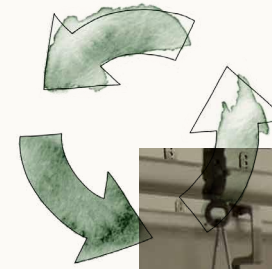
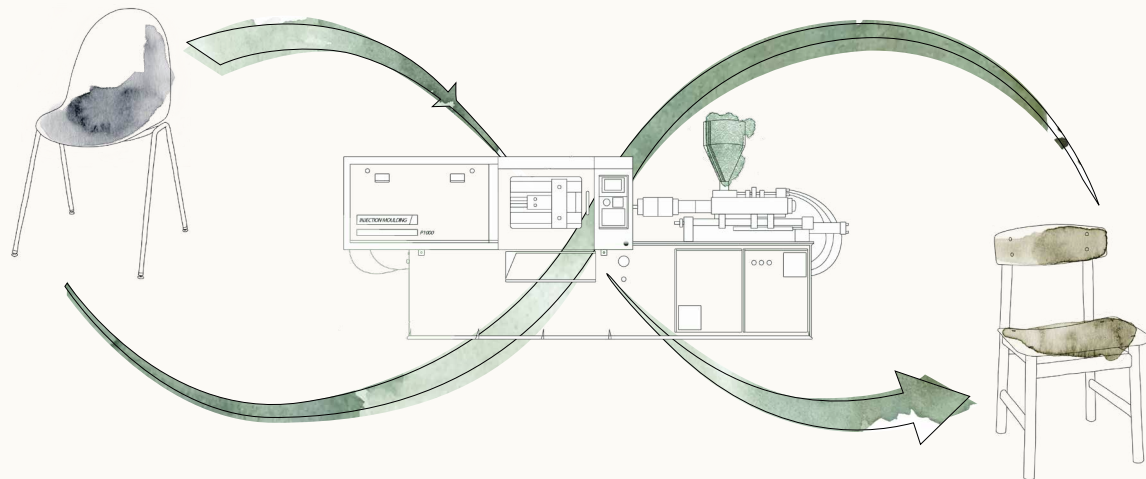
- 1/ **Industrial plastic waste.** Left over industrial plastic granulated into small plastic pieces.
- 2/ **Coffee shells.** Left over coffee shells from the roasting of coffee beans.
- 3/ **Plastic beer kegs.** Empty beer kegs are crushed and made into ready-to-use plastic granuales.
- 4/ **Spent grain.** Spent grain waste from Carlsberg brewery.
- 5/ **Mango wood.** Harvested trees that would otherwise be burnt or left to break down.
- 6/ **Discarded fishing nets.** Collected from the oceans, shredded, cleaned and made into plastic pellets.
- 7/ **Sawdust.** Wood sawdust collected from the construction of wooden furniture.



Mater Take-back system

A revolutionary way of thinking furniture

Matek is designed to be processed again and again and that's why we offer to take furniture made of Matek back at the end of its life to recycle it into new furniture. Since Mater is the sole proprietor of Matek and we have the technology to recycle it, we also see it as our responsibility to offer a take-back system. This is an essential step towards Mater's vision of becoming one hundred percent circular in our furniture production.



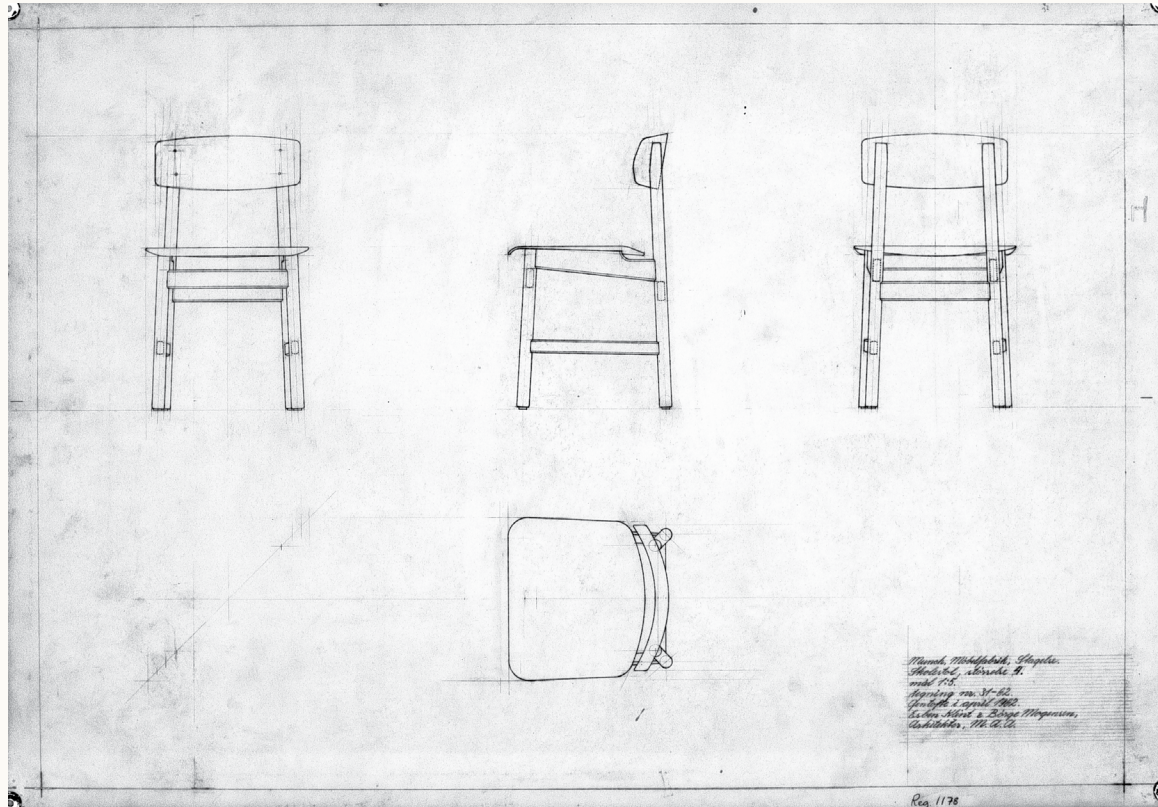
Mater furniture *news*



Presenting

New editions of The Conscious Chair

Made out of industrial plastic waste in a mix with either coffee shell waste or wood waste

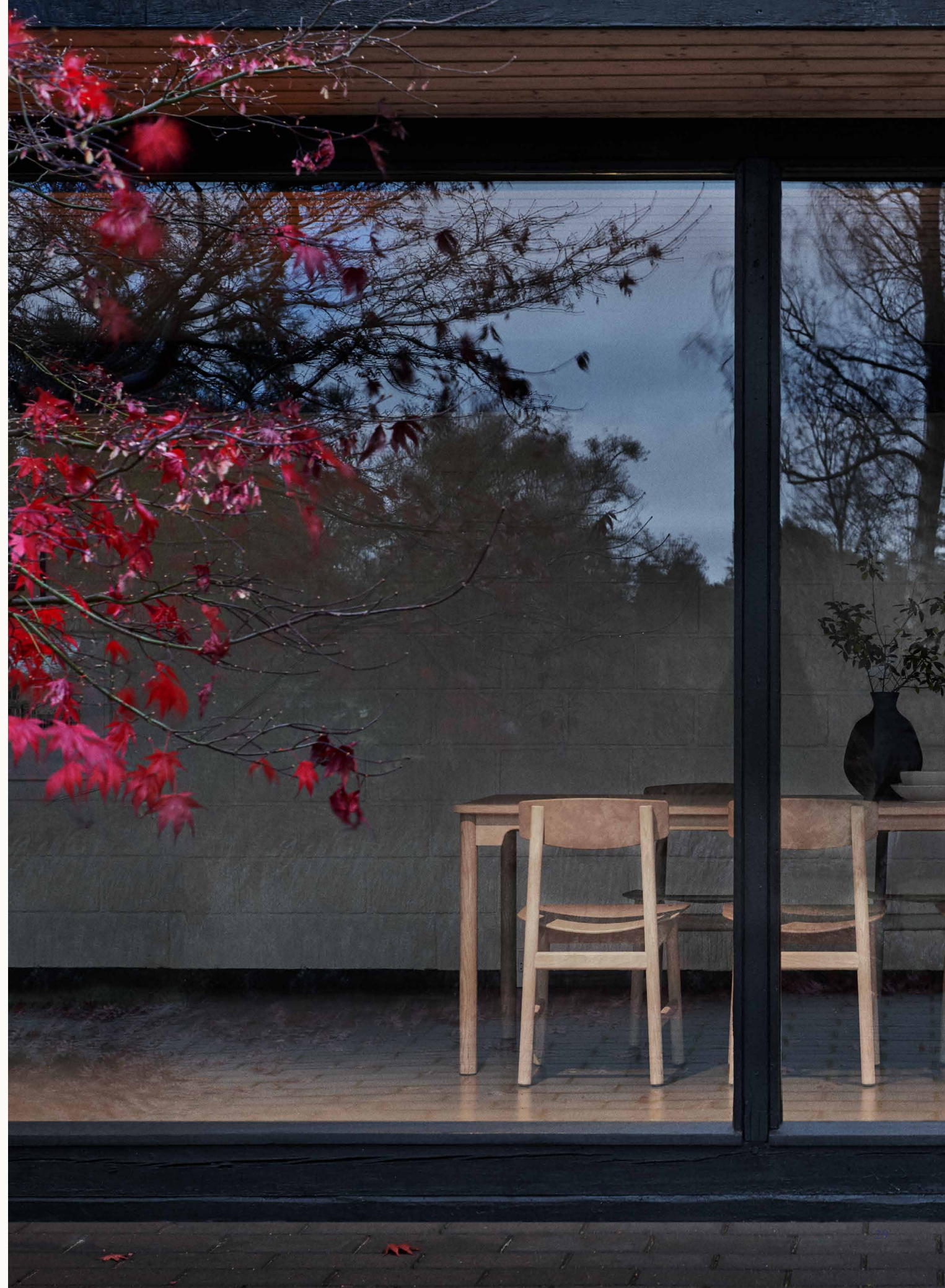


Original drawing by Børge Mogensen

Three new finishes to the Conscious Chair Collection see the day of light this year adding a welcoming variation to the series. A captivating green, a black-stained oak and a natural oak – all with seat and backrest made in different blends of our patented waste material Matek.

The Conscious Collection is Danish modern reimagined in an recycled waste edition. Designed in 1958 by the renowned Danish furniture designers and architects Børge Mogensen and Esben Klint. When launched in 2022, it was the first time a collection from Børge Mogensen was relaunched in a different material than the original.

“Our family shares the understanding, that just because you can produce some of Børge’s designs, you don’t have to. It needs to make sense in ways that cannot necessarily be measured. It must be driven by visionaries who do not accept the world’s status quo. Mater is on an important mission working with circular production. We would like to support that with our family’s name and values.” Emilie Ventujol Mogensen, grandchild of Børge Mogensen.







Børge Mogensen (1914–1972)



Arkitekt, Esben Klint (1915–1969)

| *The designers*

Børge Mogensen & Esben Klint

Danish furniture designer **Børge Mogensen** (13th April 1914 – 5th October 1972) was one of the most important among a generation of furniture designers who made Danish Modern known throughout the world.

Together with colleagues such as Arne Jacobsen and Hans Wegner, Mogensen created international respect for Danish furniture design. His simple and functional designs have enjoyed worldwide demand for more than half a century.

Danish Architect and cabinetmaker **Esben Klint** (18th June 1915 – 27th February 1969) – Son of professor and architect Kaare Klint. Esben Klint was a student at the Royal Danish Academy, after which he traveled throughout Europe working at different Design Studios both in and outside Denmark.

Esben was associated with his father's Design Studio and took over after his death. During his life he was attached to Le Klint as a consultant developing Lighting Design still on the market to this day. Esben Klint also worked on several Church restoration projects, developing bespoke furniture and lighting.



Presenting

Eternity High Stool and Eternity Swivel

Made out of coffee shell waste and industrial plastic waste

“We’re incredibly proud to take part in this exciting process and technology to create a circular chair. The foundation of our design is the material’s inspiring organic and tactile nature.”

/ Space Copenhagen

Introducing new editions to the Eternity Collection by Space Copenhagen – the Eternity Swivel with or without castors and the Eternity High Stool. The new additions continue the design of the Eternity Chair with a floating shell made of Matek, our patented circular waste material.

Designed to integrate easily into various kinds of spaces and interior aesthetics the focus is on comfort and functionality combined with industrial and sculptural features. With the new swivel base options, The Eternity Collection becomes even more suitable for work, meeting and dining arrangements in equally private homes and public spaces.

“We’re incredibly proud to take part in this exciting process and technology to create a circular chair. The foundation of our design is the material’s inspiring organic and tactile nature.” Space Copenhagen.

The name Eternity speaks to Mater’s circular mindset, made from waste materials that can recycle repeatedly. In addition, the name reflects how the design is only enhanced by repetition, creating an almost infinite movement when placed side by side in a conference room, a bar or a restaurant.







Peter Bundgaard Rützou and Signe Bindslev Henriksen

| *The designers*

Space Copenhagen

Established in 2005 by Signe Bindslev Henriksen and Peter Bundgaard Rützou. Space Copenhagen is a studio that works across multiple disciplines from furniture, lighting and refined objects to art installations, art direction and interior design for private homes, hotels and restaurants all over the world.

Space Copenhagen's intuitive approach to design embraces Poetic Modernism, resulting in designs distinctively shaped by the given circumstances, functional needs and a fundamental interest in human behaviour. Space Copenhagen's approach reflects its belief in and a slowaesthetic that centres on quality and longevity.

Highlights

fikenet + bilid



Ocean Collection

Two versions, two waste streams
– recycled fishing nets or used plastic beer kegs



One Ocean chair is made from 960g of ocean plastic waste



Jørgen and Nanna Ditzel

The Ocean Collection was originally designed in wooden veneer in 1955 by two of the 20th century's most renowned Danish designers, Jørgen and Nanna Ditzel. In 2019, Mater reimagined the design with slats made of ocean plastic waste. The series is characterised by its light structure with repeated slats and metal frames made and tested for outdoor use. The Ocean Collection is designed for disassembly, meaning that the design allows each component in its purest form to recycle into new production circles.

The classic Ocean Collection is available in black and sand. Both variants are made of recycled fishing nets and hard plastic with a steel frame of gunmetal. The vast amounts of ocean plastic waste are one of the most compelling issues facing our planet. A new innovative business model motivates fishermen across the world to dispose of their discarded fishing nets at collection points instead of dumping them in the sea.



In 2021, we initiated a collab with the Carlsberg brewery and a:gain - a company that develops, produces, and sells waste-based building elements and interiors at scale. a:gain has developed an innovative method for upcycling Carlsberg's plastic. The collab led to the expansion of the Ocean Collection

with the OC2 Collection. This variant features dark green slats made from used plastic beer kegs. When the beer kegs are empty, a:gain handles the process of granulating, cleaning and pelleting – making the plastic ready to use for casting the characteristic slats of the Ocean OC2 Collection.

“Carlsberg Denmark's deposit system for kegs means that we can give our kegs new life as outdoor furniture - a great example of the possibilities in the circular economy.”

/ Henrik Friis Fredvig,
VP On-Trade, Carlsberg Denmark





Space Copenhagen & Mater

- An extensive design bond

“The High Stool has a very special place in our hearts as it was the first piece of furniture we got into production.”

/ Space Copenhagen



Through the years, an extensive design cooperation between Mater and Space Copenhagen has developed, resulting in Danish design classics such as the Mater High Stool, The Accent Table series and more recently The Dining Chair, The Lounge Chair and The High Stool Backrest. All designs draw on the same typology – a beautiful, fluid organic design that comes across as both sculptural and minimalist. Spaces Copenhagen’s signature style is evident in

all pieces, balancing opposites – classic and modern, industrial and organic, sculptural and minimal, light and shade.

All chairs and tables are made of FSC® certified wood. In an FSC® certified forest, no more trees than the forest can reproduce are felled, so the exploitation of nature is avoided.



The characteristic of the **Accent Table Series** is the light and timeless silhouette of dedicated craftsmanship





The backrest and seat are generously rounded to embrace the human body and outweigh the need for armrests.





Lighting

The lighting collection consists of contemporary designs with a strong aesthetic and reference to Nordic minimalism. Contrasting material combinations of wood, hand-blown glass and metal lend warmth and naturality to the design. Designed by Danish and international designers.



The **Ray Lamps** combine oak and steel in a beautifully innovative contrast.

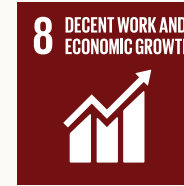
Inspired by nature, **Terho** means ‘acorns’ in Finnish and refers to the organic and appealing shape of acorns found in nature.

Liuku means to slide in Finnish and refers to the elegant transition from the lamp’s wooden base to the glass shade.



Always committed to doing better

Since its foundation, Mater's core values have been sustainability and circularity. This aligns perfectly with United Nations Global Compact and the Sustainable Development Goals established by the UN in 2015. The Sustainable Development Goals is a shared blueprint adopted by 193 nations that contain 17 sustainable development goals to improve our planet and living conditions by 2030. We have been part of the UN Global Compact since 2007 and currently support seven of the 17 Sustainable Development Goals.



Our code of conduct ensures that we work to achieve better standards: safe working conditions, fair wages, fair prices and adherence to local environmental standards.



We bring new innovative production techniques into the furniture business and recycle industrial waste, as evidenced by our revolutionary circular facility for large-scale production of Matek.



Sustainable consumption is about doing more with less. Our circular production uses waste, which means we support consumption-driven change – the more we sell, the more waste we remove.



We help reduce carbon emissions by using circular and waste materials in our designs. For example, The Ocean Chair in our Ocean Collection saves 82% CO2 emissions compared to virgin plastic.



Our Ocean and Nova Sea Collections are both made of discarded fishing nets from the oceans. We are proud that these products contribute to reducing landfill, marine pollution and the loss of valuable resources.



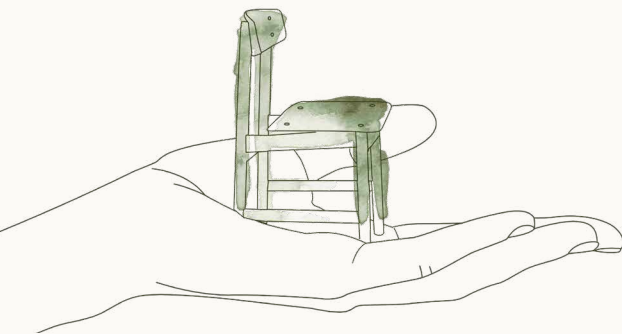
All our wooden products are FSC-certified, which means the wood comes from responsibly managed forests, where harvesting trees is limited to what the forests can reproduce, avoiding the exploitation of nature. FSC® certification also ensures fair pricing, fair wages and fair working conditions.



We work with production partners who share the same ambition as Mater – creating partnerships for change. Together we are committed to searching for new and better ways of responsibly making timeless designs.

Linking sustainability to each piece of furniture

Thinking sustainably has always been an innate way of how we work at Mater. But the last year's increased attention to the subject has taught us that it is equally important to tell the story of sustainability in connection to the individual product. On our website, you can thus find information on which of the United Nations Sustainable Development Goals each product supports. Visually, it is also possible to easily decode if the furniture is made from Matek, our patented waste material, as well, as it is possible to see how much waste has been used in the production of the piece. And last but not least, you can also see the carbon footprint of each product.



Matek™



Eternity Chair

Made from Matek® and partly recycled steel

CO₂ Footprint

42 kg CO₂e

= 4330 g
of waste materials



*calculated using Målbar Software V. 2.942 on the 12.08.22

Indoor collection

CONSCIOUS CHAIR 3162
by Børge Mogensen & Esben Klint

Item no. 10001

Item no. 10002

Item no. 10003



Solid oak or beech wood frame, FSC® certified
Recycled coffee shells mixed with industrial plastic waste
Coffee Waste, Light (10001) / Coffee Waste, Black Beech (10002) / Wood Waste, Grey (10003)
W 47 cm D 46.5 cm H 78.5 cm SH 46 cm



CONSCIOUS CHAIR 3162
by Børge Mogensen & Esben Klint

Item no. 10004

Item no. 10005

Item no. 10006



Solid oak or beech wood frame, FSC® certified
Recycled coffee shells mixed with industrial plastic waste
Coffee Waste, Dark (10004) / Coffee Waste, Green (10005) / Coffee Waste, Black Oak (10006)
W 47 cm D 46.5 cm H 78.5 cm SH 46 cm

NEW

NEW

NEW



ETERNITY SIDECHAIR
by Space Copenhagen

Item no. 11001



Steel frame, Gunmetal
Recycled coffee shells mixed with industrial plastic waste
Coffee Waste, Black
W 53.5 cm D 55 cm H 87.5 cm SH 46 cm



ETERNITY SIDECHAIR
by Space Copenhagen

Item no. 11003
w/ upholstered seat
Re-wool 198

Item no. 11007
w/ upholstered seat
Re-wool 218

Item no. 11013
w/ upholstered seat
Re-wool 378



Steel frame, Gunmetal
Recycled coffee shells mixed with industrial plastic waste
Coffee Waste, Black
W 53.5 cm D 55 cm H 87.5 cm SH 46 cm



ETERNITY SIDECHAIR
by Space Copenhagen

Item no. 11005
w/ upholstered front
Re-wool 198

Item no. 11011
w/ upholstered front
Re-wool 218

Item no. 11015
w/ upholstered front
Re-wool 378



Steel frame, Gunmetal
Recycled coffee shells mixed with industrial plastic waste
Coffee Waste, Black
W 53.5 cm D 55 cm H 87.5 cm SH 46 cm



ETERNITY ARMCHAIR
by Space Copenhagen



Steel frame, Gunmetal
Recycled coffee shells mixed with
industrial plastic waste
Coffee Waste, Black
W 53.5 cm D 55 cm H 87.5 cm SH 46 cm

Item no. 11002



ETERNITY SWIVEL
by Space Copenhagen



Aluminum frame, Black Painted
Recycled coffee shells mixed with
industrial plastic waste
Coffee Waste, Black
W 50 cm D 50 cm H 91.5 cm SH 48 cm

Item no. 10020

NEW



ETERNITY ARMCHAIR
by Space Copenhagen



Steel frame, Gunmetal
Recycled coffee shells mixed with
industrial plastic waste
Coffee Waste, Black
W 53.5 cm D 55 cm H 87.5 cm SH 46 cm

Item no. 11004
w/ upholstered seat
Re-wool 198



Item no. 11008
w/ upholstered seat
Re-wool 218



Item no. 11014
w/ upholstered seat
Re-wool 378



ETERNITY SWIVEL
by Space Copenhagen



Aluminum frame, Black Painted
Recycled coffee shells mixed with
industrial plastic waste
Coffee Waste, Black
W 50 cm D 50 cm H 91.5 cm SH 48 cm

Item no. 10025
w/ upholstered seat
Re-wool 198

NEW



Item no. 10026
w/ upholstered seat
Re-wool 218

NEW



Item no. 10027
w/ upholstered seat
Re-wool 378

NEW



ETERNITY ARMCHAIR
by Space Copenhagen



Steel frame, Gunmetal
Recycled coffee shells mixed with
industrial plastic waste
Coffee Waste, Black
W 53.5 cm D 55 cm H 87.5 cm SH 46 cm

Item no. 11006
w/ upholstered front
Re-wool 198



Item no. 11012
w/ upholstered front
Re-wool 218



Item no. 11016
w/ upholstered front
Re-wool 378



ETERNITY SWIVEL
by Space Copenhagen



Aluminum frame, Black Painted
Recycled coffee shells mixed with
industrial plastic waste
Coffee Waste, Black
W 50 cm D 50 cm H 91.5 cm SH 48 cm

Item no. 10028
w/ upholstered front
Re-wool 198

NEW



Item no. 10029
w/ upholstered front
Re-wool 218

NEW



Item no. 10030
w/ upholstered front
Re-wool 378

NEW



ETERNITY SWIVEL W/ CASTORS
by Space Copenhagen



Aluminum frame, Black Painted
Recycled coffee shells mixed with
industrial plastic waste
Coffee Waste, Black
W 64 cm D 64 cm H 91.5 cm SH 48 cm

Item no. 10021
NEW



ETERNITY SWIVEL
by Space Copenhagen



Aluminum frame, Polished
Recycled coffee shells mixed with
industrial plastic waste
Coffee Waste, Black
W 50 cm D 50 cm H 91.5 cm SH 48 cm

Item no. 10022
NEW



ETERNITY SWIVEL W/ CASTORS
by Space Copenhagen



Aluminum frame, Black Painted
Recycled coffee shells mixed with
industrial plastic waste
Coffee Waste, Black
W 64 cm D 64 cm H 91.5 cm SH 48 cm

Item no. 10031
w/ upholstered seat
Re-wool 198

NEW



Item no. 10032
w/ upholstered seat
Re-wool 218

NEW



Item no. 10033
w/ upholstered seat
Re-wool 378

NEW



ETERNITY SWIVEL
by Space Copenhagen



Aluminum frame, Polished
Recycled coffee shells mixed with
industrial plastic waste
Coffee Waste, Black
W 50 cm D 50 cm H 91.5 cm SH 48 cm

Item no. 10037
w/ upholstered seat
Re-wool 198

NEW



Item no. 10038
w/ upholstered seat
Re-wool 218

NEW



Item no. 10039
w/ upholstered seat
Re-wool 378

NEW



ETERNITY SWIVEL W/ CASTORS
by Space Copenhagen



Aluminum frame, Black Painted
Recycled coffee shells mixed with
industrial plastic waste
Coffee Waste, Black
W 64 cm D 64 cm H 91.5 cm SH 48 cm

Item no. 10034
w/ upholstered front
Re-wool 198

NEW



Item no. 10035
w/ upholstered front
Re-wool 218

NEW



Item no. 10036
w/ upholstered front
Re-wool 378

NEW



ETERNITY SWIVEL
by Space Copenhagen



Aluminum frame, Polished
Recycled coffee shells mixed with
industrial plastic waste
Coffee Waste, Black
W 50 cm D 50 cm H 91.5 cm SH 48 cm

Item no. 10040
w/ upholstered front
Re-wool 198

NEW



Item no. 10041
w/ upholstered front
Re-wool 218

NEW



Item no. 10042
w/ upholstered front
Re-wool 378

NEW



ETERNITY SWIVEL W/ CASTORS
by Space Copenhagen



Aluminum frame, Polished
Recycled coffee shells mixed with industrial plastic waste
Coffee Waste, Black
W 64 cm D 64 cm H 91.5 cm SH 48 cm

Item no. 10023
NEW



ETERNITY HIGH STOOL, H 69 CM
by Space Copenhagen



Steel frame, Gunmetal
Recycled coffee shells mixed with industrial plastic waste
Coffee Waste, Black
W 51.5 cm D 55 cm H 111.5 cm SH 69 cm

Item no. 11024
NEW



ETERNITY SWIVEL W/ CASTORS
by Space Copenhagen



Aluminum frame, Polished
Recycled coffee shells mixed with industrial plastic waste
Coffee Waste, Black
W 64 cm D 64 cm H 91.5 cm SH 48 cm

Item no. 10043
w/ upholstered seat
Re-wool 198

NEW



Item no. 10044
w/ upholstered seat
Re-wool 218

NEW



Item no. 10045
w/ upholstered seat
Re-wool 378

NEW



ETERNITY HIGH STOOL, H 69 CM
by Space Copenhagen



Steel frame, Gunmetal
Recycled coffee shells mixed with industrial plastic waste
Coffee Waste, Black
W 51.5 cm D 55 cm H 111.5 cm SH 69.5 cm

Item no. 11049
w/ upholstered seat
Re-wool 198

NEW



Item no. 11050
w/ upholstered seat
Re-wool 218

NEW



Item no. 11051
w/ upholstered seat
Re-wool 378

NEW



ETERNITY SWIVEL W/ CASTORS
by Space Copenhagen



Aluminum frame, Polished
Recycled coffee shells mixed with industrial plastic waste
Coffee Waste, Black
W 64 cm D 64 cm H 91.5 cm SH 48 cm

Item no. 10046
w/ upholstered front
Re-wool 198

NEW



Item no. 10047
w/ upholstered front
Re-wool 218

NEW



Item no. 10048
w/ upholstered front
Re-wool 378

NEW



ETERNITY HIGH STOOL, H 69 CM
by Space Copenhagen



Steel frame, Gunmetal
Recycled coffee shells mixed with industrial plastic waste
Coffee Waste, Black
W 51.5 cm D 55 cm H 111.5 cm SH 69.5 cm

Item no. 11052
w/ upholstered front
Re-wool 198

NEW



Item no. 11053
w/ upholstered front
Re-wool 218

NEW



Item no. 11054
w/ upholstered front
Re-wool 378

NEW



EARTH STOOL, H 69 CM
by Eva Harlou

Item no. 06045

Item no. 06048



20% recycled steel frame, Gunmetal
Recycled coffee shells mixed with industrial plastic waste
Coffee Waste Dark (06045) / Coffee Waste Light (06048)
W 37 cm D 27 cm H 69 cm



NOVA SEA SIDECHAIR
by Arde

Item no. 09011
w/ upholstered seat

Item no. 09013



20% recycled steel frame, gunmetal finish
Recycled fishing nets / industrial plastic waste.
Black
W 55 cm D 55 cm H 80 cm
Note: Stackable up to 6 pcs (12 pcs on a chair trolley)



EARTH STOOL, H 74 CM
by Eva Harlou

Item no. 06042

Item no. 06047



20% recycled steel frame, Gunmetal
Recycled coffee shells mixed with industrial plastic waste
Coffee Waste Dark (06042) / Coffee Waste Light (06047)
W 37 cm D 27 cm H 74 cm



NOVA SEA ARMCHAIR
by Arde

Item no. 09012
w/ upholstered seat

Item no. 09014



20% recycled steel frame, gunmetal finish
Recycled fishing nets / industrial plastic waste.
Black
W 55 cm D 55 cm H 80 cm ARH 67 cm
Note: Stackable up to 6 pcs (12 pcs on a chair trolley)



EARTH STOOL BACKREST, H 69 CM
by Eva Harlou

Item no. 06062

Item no. 06068



20% recycled steel frame, Gunmetal
Recycled coffee shells mixed with industrial plastic waste
Coffee Waste Dark (06062) / Coffee Waste Light (06068)
W 37 cm D 27 cm H 99cm SH 69 cm



EARTH STOOL BACKREST, H 74 CM
by Eva Harlou

Item no. 06065

Item no. 06067



20% recycled steel frame, Gunmetal
Recycled coffee shells mixed with industrial plastic waste
Coffee Waste Dark (06065) / Coffee Waste Light (06067)
W 37 cm D 27 cm H 104 cm SH 74



MATER CAFÉ TABLE
60 X 60 CM, H 71
by Mater

Item no.
11997 / 11993
NEW



Item no.
11998 / 11993
NEW



Item no.
11999 / 11993
NEW



20% recycled steel frame, gunmetal finish
Recycled coffee shells or wooden sawdust
mixed with industrial plastic waste
Coffee Waste, Light (11998) / Coffee Waste, Black
(11997) / Wood Waste, Grey (11999)
W 60 cm D 60 cm H 71.6 cm

MATER CAFÉ TABLE
Ø60 CM, H 71
by Mater

Item no.
11994 / 11993
NEW



Item no.
11995 / 11993
NEW



Item no.
11996 / 11993
NEW



20% recycled steel frame, gunmetal finish
Recycled coffee shells or wooden sawdust
mixed with industrial plastic waste
Coffee Waste, Light (11995) / Coffee Waste, Black
(11994) / Wood Waste, Grey (11996)
Ø 60 cm H 71.6 cm

MATER BAR TABLE
60 X 60 CM, H 106
by Mater

Item no.
11997 / 11990
NEW



Item no.
11998 / 11990
NEW



Item no.
11999 / 11990
NEW



20% recycled steel frame, gunmetal finish
Recycled coffee shells or wooden sawdust
mixed with industrial plastic waste
Coffee Waste, Light (11998) / Coffee Waste, Black
(11997) / Wood Waste, Grey (11999)
W 60 cm D 60 cm H 106.6 cm

MATER BAR TABLE
Ø60 CM, H 106
by Mater

Item no.
11994 / 11990
NEW



Item no.
11995 / 11990
NEW



Item no.
11996 / 11990
NEW



20% recycled steel frame, gunmetal finish
Recycled coffee shells or wooden sawdust
mixed with industrial plastic waste
Coffee Waste, Light (11995) / Coffee Waste, Black
(11994) / Wood Waste, Grey (11996)
Ø 60 cm H 106.6 cm

LOW STOOL / HIGH STOOL
by Space Copenhagen



Solid Beech, FSC® certified
Dark Stain Lacquered
Black leather seat
W 45 cm D 36 cm

Item no. 01003
H 47 cm



Item no. 01002
H 74 cm



Item no. 01004
H 69 cm



LOW STOOL / HIGH STOOL
by Space Copenhagen



Solid Beech, FSC® certified,
Black Stain Lacquered
Black leather seat
W 45 cm D 36 cm

Item no. 01013
H 47 cm



Item no. 01012
H 74 cm



Item no. 01014
H 69 cm



LOW STOOL / HIGH STOOL
by Space Copenhagen



Beech, FSC® certified.
Sirka Grey Stain Lacquered, Black leather seat
W 45 cm D 36 cm

Item no. 01007
H 47 cm



Item no. 01006
H 74 cm



Item no. 01008
H 69 cm



LOW STOOL / HIGH STOOL
by Space Copenhagen



70% recycled aluminum, polished
Black leather seat
W 45 cm D 36 cm

Item no. 01023
H 47 cm



Item no. 01022
H 74 cm



Item no. 01024
H 69 cm



Indoor collection

LOW STOOL / HIGH STOOL
by Space Copenhagen



Soaped Oak, FSC® certified
Pigmentet upholstery, Natural
W 45 cm D 36 cm

Item no. 01033
H 47 cm



Item no. 01032
H 74 cm



Item no. 01034
H 69 cm



THE DINING CHAIR
by Space Copenhagen



Oak, FSC® Certified / Beech, FSC® certified
Matt Lacquered Oak / Sirka Grey Stain Oak /
Black Lacquered Beech
Pigmentet upholstery, Natural / Black
W 52 cm D 44 cm H 80 cm SH 47 cm

Item no. 01201



Item no. 01202



Item no. 01204



LOW STOOL / HIGH STOOL
by Space Copenhagen



Sirka Grey Stain Lacquered Oak,
FSC® certified
Pigmentet upholstery, Black
W 45 cm D 36 cm

Item no. 01043
H 47 cm



Item no. 01042
H 74 cm



Item no. 01044
H 69 cm



HIGH STOOL BACKREST
by Space Copenhagen



Oak, FSC® Certified / Beech, FSC® certified
Matt Lacquered Oak / Sirka Grey Stain Oak /
Black Lacquered Beech
Pigmentet upholstery, Natural / Black
W 46 cm D 38 cm H 102 cm SH 74 cm

Item no. 01211



Item no. 01212



Item no. 01214



LOW STOOL / HIGH STOOL
by Space Copenhagen



Dark Stain Lacquered Oak, FSC® certified.
Pigmentet upholstery, Black
W 45 cm D 36 cm

Item no. 01053
H 47 cm



Item no. 01052
H 74 cm



Item no. 01054
H 69 cm



HIGH STOOL BACKREST
by Space Copenhagen



Oak, FSC® Certified / Beech, FSC® certified
Matt Lacquered Oak / Sirka Grey Stain Oak /
Black Lacquered Beech
Pigmentet upholstery, Natural / Black
W 46 cm D 38 cm H 97 cm SH 69 cm

Item no. 01221



Item no. 01222



Item no. 01224



HIGH STOOL
by Space Copenhagen



Black Stain Lacquered Oak, FSC® certified.
Pigmentet upholstery, Black
W 45 cm D 36 cm

Item no. 01082
H 74 cm



Item no. 01084
H 69 cm



THE LOUNGE CHAIR
by Space Copenhagen



Oak, FSC® Certified / Beech, FSC® certified
Matt Lacquered Oak / Sirka Grey Stain Oak /
Black Lacquered Beech
Pigmentet upholstery, Natural / Black
W 65 cm D 69 cm H 72 cm SH 40 cm

Item no. 01231



Item no. 01232



Item no. 01234



NESTOR SIDECHAIR
by Tom Stepp

Item no. 08206



Item no. 08106



Solid Oak / Beech Wood, FSC® certified
Matt Lacquered / Natural Paper cord seat
Sirka Grey Stain / Natural Paper cord seat
W 50 cm D 53 cm H 76 cm SH 44 cm

ROCKER
by Shawn Place

Item no. 07010



Item no. 07011



Oak, FSC® certified
Matt Lacquered / Harness Whiskey
(Vegetable tanned leather)
Sirka Grey Stain / Harness Mustang
(Vegetable tanned leather)
W 59.5 cm D 86.5 cm H 78 cm SH 33 cm

NESTOR SIDECHAIR
by Tom Stepp

Item no. 08005



Item no. 08006



Solid Beech Wood, FSC® certified
Black Lacquered / Black Paper cord seat
Black Lacquered / Natural Paper cord seat
W 50 cm D 53 cm H 76 cm SH 44 cm

WINSTON DAYBED
by Eva Harlou

Item no. 06001



Item no. 06002



Oak, FSC® certified
Matt Lacquered, Cane work
Cushion in 50 % jute / 50 % GOTS cotton
L 195 cm D 80 cm H 35.5 cm

NESTOR ARMCHAIR
by Tom Stepp

Item no. 08203



Item no. 08103



Solid Oak / Beech Wood, FSC® certified
Matt Lacquered / Natural Paper cord seat
Sirka Grey Stain / Natural Paper cord seat
W 56 cm D 53 cm H 76 cm SH 44 cm ARH 68 cm

WINSTON BENCH
by Eva Harlou

Item no. 06003



Oak, FSC® certified
Matt Lacquered, Cane work
L 120 cm D 40 cm H 45 cm

NESTOR ARMCHAIR
by Tom Stepp

Item no. 08004



Item no. 08003



Solid Beech Wood, FSC® certified
Black Lacquered / Black Paper cord seat
Black Lacquered / Natural Paper cord seat
W 56 cm D 53 cm H 76 cm SH 44 cm ARH 68 cm

Indoor collection

BOWL TABLE, SMALL
by Ayush Kasliwal

Item no. 01604



Item no. 01605



Item no. 01606



Mango Wood, Sustainably harvested
Matt Lacquered / Sirka Grey Stain
/ Black Lacquered
Black steel legs
Small: Ø 40 cm H 38 cm

BOWL TABLE, X LARGE
by Ayush Kasliwal

Item no. 01611



Item no. 01612



Item no. 01613



Mango Wood, Sustainably harvested
Natural Matt Lacquered / Sirka Grey Stain
/ Black Lacquered
Black steel legs
X-Large: Ø 75 cm H 38 cm

BOWL TABLE, MEDIUM
by Ayush Kasliwal

Item no. 01601



Item no. 01602



Item no. 01603



Mango Wood, Sustainably harvested
Matt Lacquered / Sirka Grey Stain
/ Black Lacquered
Black steel legs
Medium: Ø 46 cm H 52 cm

CONSCIOUS 5462 TABLE
by Børge Mogensen & Esben Klint



Solid oak wood, FSC® certified
Soaped finish
W 160 cm D 90 cm H 75.5 cm

Item no. 10011



BOWL TABLE WASTE EDITION
by Ayush Kasliwal

Item no. 11601



Item no. 11602



Item no. 11603



 **Matek™**
Aluminium legs, Black powder coated
Recycled coffee shells or wood waste mixed with
industrial plastic waste
Coffee Waste, black (11601) / Coffee Waste, light (11602)
/ Wood Waste, grey (11603)
Ø 46 cm H 52 cm

CONSCIOUS 5462, TABLEPLATE
by Børge Mogensen & Esben Klint



Solid beech wood, FSC® certified
Grey lacquered finish
(Table not included only tableplate)
W 40 cm D 90 cm H 2 cm

Item no. 10023



BOWL TABLE, LARGE
by Ayush Kasliwal

Item no. 01607



Item no. 01608



Item no. 01609



Mango Wood, Sustainably harvested
Matt Lacquered / Sirka Grey Stain
/ Black Lacquered
Black steel legs
Large: Ø 52 cm H 46 cm

MATER DINING TABLE
by Mater & Thomas Lykke



Beech, FSC® certified
Sirka Grey Stain
Black metal legs
W 220 cm D 100 cm H 73 cm

Item no. 01974



ACCENT TABLE, SMALL
by Space Copenhagen



Oak, FSC® certified
Matt Lacquered / Sirka Grey Stain
/ Black Lacquered
Small: Ø 45 cm H 42 cm

Item no. 01411



Item no. 01401



Item no. 01421



ACCENT OVAL LOUNGE TABLE
by Space Copenhagen



Oak, FSC® certified
Matt Lacquered / Sirka Grey Stain
W 80 cm L 120 cm H 42 cm

Item no. 01414



Item no. 01404



ACCENT TABLE, MEDIUM
by Space Copenhagen



Oak, FSC® certified
Matt Lacquered / Sirka Grey Stain
/ Black Lacquered
Medium: Ø 45 cm H 55 cm

Item no. 01412



Item no. 01402



Item no. 01422



ACCENT CAFÉ TABLE
by Space Copenhagen



Oak, FSC® certified
Matt Lacquered / Sirka Grey Stain
Ø 70 cm H 73 cm

Item no. 01416



Item no. 01406



ACCENT TABLE, LARGE
by Space Copenhagen



Oak, FSC® certified
Matt Lacquered / Sirka Grey Stain
/ Black Lacquered
Large: Ø 60 cm H 55 cm

Item no. 01413



Item no. 01403



Item no. 01423



ACCENT DINING TABLE, Ø 110
by Space Copenhagen



Oak, FSC® certified
Matt Lacquered / Sirka Grey Stain
Ø 110 cm H 73 cm

Item no. 01415



Item no. 01405



Item no. 01425



ACCENT TABLE, X LARGE
by Space Copenhagen



Oak, FSC® certified
Matt Lacquered / Sirka Grey Stain
/ Black Lacquered
X Large Ø 70 cm H 42 cm

Item no. 01418



Item no. 01408



Item no. 01428



ACCENT DINING TABLE, Ø140
by Space Copenhagen



Oak, FSC® certified
Matt Lacquered / Sirka Grey Stain
Ø 140 cm H 73 cm

Item no. 01417



Item no. 01407



Item no. 01427



Outdoor collection

OCEAN CHAIR
by Jørgen & Nanna Ditzel



Recycled fishing nets mixed with industrial plastic waste
Black / Sand
20% recycled steel frame, gunmetal finish
W 60 cm D 56 cm H 81 cm SH 46 cm ARH 67 cm
Note: Stackable up to 4 pcs

Item no. 09301



Item no. 09303



OCEAN BENCH
by Jørgen & Nanna Ditzel



Recycled fishing nets mixed with industrial plastic waste
Black / Sand
20% recycled steel frame, gunmetal finish
W 79 cm D 70 cm H 30 SH 46 cm ARH 67 cm

Item no. 09351



Item no. 09353



OCEAN OC2 CHAIR
by Jørgen & Nanna Ditzel



Recycled plastic beer kegs from Carlsberg and a:gain mixed with industrial plastic waste
Green
20% recycled steel frame, gunmetal finish
W 60 cm D 56 cm H 81 cm SH 46 cm ARH 67 cm
Note: Stackable up to 4 pcs

Item no. 09304



OCEAN OC2 BENCH
by Jørgen & Nanna Ditzel



Recycled plastic beer kegs from Carlsberg and a:gain mixed with industrial plastic waste
Green
20% recycled steel frame, gunmetal finish
W 79 cm D 70 cm H 30 SH 46 cm ARH 67 cm

Item no. 09354



OCEAN LOUNGE CHAIR
by Jørgen & Nanna Ditzel



Recycled fishing nets mixed with industrial plastic waste
Black / Sand
20% recycled steel frame, gunmetal finish
W 72 cm D 63 cm H 67 cm SH 39 cm ARH 55 cm
Note: Stackable up to 4 pcs

Item no. 09331



Item no. 09333



OCEAN OC2 LOUNGE CHAIR
by Jørgen & Nanna Ditzel



Recycled plastic beer kegs from Carlsberg and a:gain mixed with industrial plastic waste
Green
20% recycled steel frame, gunmetal finish
W 72 cm D 63 cm H 67 cm SH 39 cm ARH 55 cm
Note: Stackable up to 4 pcs

Item no. 09334



OCEAN 2 PERS. TABLE
by Jørgen & Nanna Ditzel



Recycled fishing nets mixed with industrial plastic waste
Black / Sand
20% recycled steel frame, gunmetal finish
W 70 cm D 70 cm H 74 cm

Item no. 09311



Item no. 09313



OCEAN LOUNGE TABLE
by Jørgen & Nanna Ditzel



Recycled fishing nets mixed with industrial plastic waste
Black / Sand
20% recycled steel frame, gunmetal finish
W 79 cm D 70 cm H 30

Item no. 09341



Item no. 09343



OCEAN OC2 2 PERS. TABLE
by Jørgen & Nanna Ditzel



Recycled plastic beer kegs from Carlsberg and again mixed with industrial plastic waste
Green
20% recycled steel frame, gunmetal finish
W 70 cm D 70 cm H 74 cm

Item no. 09314



OCEAN OC2 LOUNGE TABLE
by Jørgen & Nanna Ditzel



Recycled plastic beer kegs from Carlsberg and again mixed with industrial plastic waste
Green
20% recycled steel frame, gunmetal finish
W 79 cm D 70 cm H 30

Item no. 09344

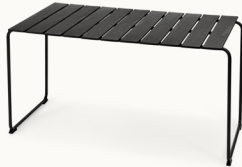


OCEAN 4 PERS. TABLE
by Jørgen & Nanna Ditzel



Recycled fishing nets mixed with industrial plastic waste
Black / Sand
20% recycled steel frame, gunmetal finish
L 140 cm D 70 cm H 74 cm

Item no. 09321



Item no. 09323

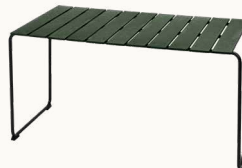


OCEAN OC2 4 PERS. TABLE
by Jørgen & Nanna Ditzel



Recycled plastic beer kegs from Carlsberg and again mixed with industrial plastic waste
Green
20% recycled steel frame, gunmetal finish
L 140 cm D 70 cm H 74 cm

Item no. 09324



Lighting

TERHO LAMP, SMALL
by Maija Puoskari

Item no. 02301

Item no. 02311

Linden Wood
Natural / Opal white - Black lacquered /
Smoked
Glass shade, mouth blown, Textile cord
E27 — Max 6W LED
Small: Ø 135 mm H 215 mm



LIUKU BASE
by Maija Puoskari

Item no. 02901

Item no. 02902

Linden Wood
Natural Matt Lacquered
Textile cord
GU10 — LED Max 4W
Ø 140 mm
Ø 140 mm H 195 mm

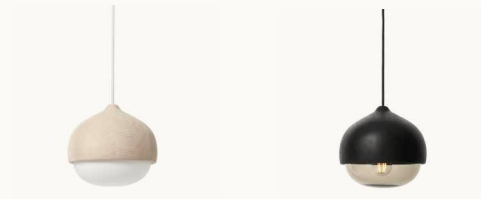


TERHO LAMP, MEDIUM
by Maija Puoskari

Item no. 02302

Item no. 02312

Linden Wood
Natural / Opal white - Black lacquered /
Smoked
Glass shade, mouth blown, Textile cord
E27 — Max 6W LED
Medium: Ø 240 mm H 215 mm



LIUKU PENDANT BALL
by Maija Puoskari

**Item no. 02901
Shade no. 02911**

**Item no. 02901
Shade no. 02912**

Linden Wood
Natural Matt Lacquered
Glass shade, mouth blown, Textile cord
Transparent / Smoked
GU10 — LED Max 4W
Ø 195 mm H 345 mm



TERHO LAMP, LARGE
by Maija Puoskari

Item no. 02303

Item no. 02313

Linden Wood
Natural / Opal white - Black lacquered /
Smoked
Glass shade, mouth blown, Textile cord
E27 — Max 6W LED
Large: Ø 330 mm H 300 mm



LIUKU PENDANT DROP
by Maija Puoskari

**Item no. 02902
Shade no. 02911**

**Item no. 02902
Shade no. 02912**

Linden Wood
Natural Matt Lacquered
Glass shade, mouth blown, Textile cord
Transparent / Smoked
GU10 — LED Max 4W
Ø 195 mm H 405 mm



LIUKU BASE
by Maija Puoskari

Item no. 02903

Item no. 02904

Linden Wood
Black Lacquered
Textile cord
GU10 — LED Max 4W
Ø 140 mm
Ø 140 mm H 195 mm



LIUKU PENDANT BALL
by Maija Puoskari

Item no. 02903
Shade no. 02911

Item no. 02903
Shade no. 02912

Linden Wood
Black Lacquered
Glass shade, mouth blown, Textile cord
Transparent / Smoked
GU10 — LED Max 4W
Ø 195 mm H 345 mm



LIUKU PENDANT DROP
by Maija Puoskari

Item no. 02904
Shade no. 02911

Item no. 02904
Shade no. 02912

Linden Wood
Black Lacquered
Glass shade, mouth blown, Textile cord
Transparent / Smoked
GU10 — LED Max 4W
Ø 195 mm H 405 mm



RAY PENDANT
by PEDERJESSEN



Oak, FSC® certified
Steel, White / Black painted, Textile cord
GU9 — LED Max 3.5W
Small: Ø 119 mm

Item no. 02501

Item no. 02502



RAY PENDANT
by PEDERJESSEN



Oak, FSC® certified
Steel, White / Black painted, Textile cord
GU9 — LED Max 3.5W
Medium: Ø 150 mm H 125 mm

Item no. 02503

Item no. 02504



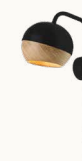
RAY WALL LAMP
by PEDERJESSEN



Oak, FSC® certified
Steel, White / Black painted, Textile cord
GU9 — LED Max 3.5W
H 318 mm D 172 mm

Item no. 02511

Item no. 02512



RAY TABLE LAMP
by PEDERJESSEN



Oak, FSC® certified
Steel, White / Black painted, Textile cord
GU9 — LED Max 3.5W
Ø 195 mm H 405 mm

Item no. 02521



Item no. 02522



DOME LAMP
by Todd Bracher

Spun aluminum, steel base
Black painted
Textile cord
2 x E27 — Max 6W LED/energy saving
Ø 400 mm H 380 mm

Item no. 00301



RAY FLOOR LAMP
by PEDERJESSEN



Oak, FSC® certified
Steel, White / Black painted, Textile cord
GU9 — LED Max 3.5W
Ø 15.3 cm H 125.4 cm

Item no. 02531



Item no. 02532



BABY DOME LAMP
by Todd Bracher

Spun aluminum, steel base
Black / Aluminum / Brass
Textile cord
2 x E27 — Max 6W LED/energy saving
Ø 250 mm H 245 mm

Item no. 00311



Item no. 00315



Item no. 00317



Objects

TRUMPET COAT STAND
by Space Copenhagen



70% Recycled aluminum waste
Polished / Black powder coated
Ø 64 cm H 200 cm

Item no. 00225



Item no. 00226



Material overview

**BEECH WOOD,
FSC® CERTIFIED**

Variation will occur due
to natural materials



Dark Stained



Black Stained



Sirka Grey Stained

**MANGO WOOD,
FSC® CERTIFIED**

Variation will occur due
to natural materials



Natural Matt
Lacquered



Black Stained



Sirka Grey Stained

**LINDEN WOOD,
FSC® CERTIFIED**

Variation will occur due
to natural materials



Natural Matt
Lacquered



Black Stained

**OAK WOOD,
FSC® CERTIFIED**

Variation will occur due
to natural materials



Natural Matt
Lacquered



Black Stained



Sirka Grey Stained



Soaped



Dark Stained

**PINE WOOD,
FSC® CERTIFIED**

Variation will occur due
to natural materials



Natural Matt
Lacquered

LEATHER

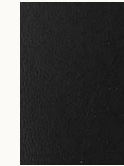
Variation will occur due
to natural materials



Ultra Brandy



Ultra Cognac



Ultra Black



Mustang



Whiskey



Natural



Black

ALUMINUM



Polished

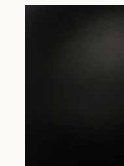


Black Coated

METAL



Brass



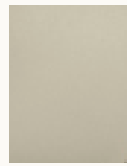
Black coated

**RECYCLED FISHING NETS
& OCEAN PLASTIC WASTE**

Variation will occur due
to recycled materials



Black,
Ocean Collection



Sand,
Ocean Collection



Black,
Nova Sea Collection

**RECYCLED PLASTIC BEER KEGS
& INDUSTRIAL PLASTIC WASTE**

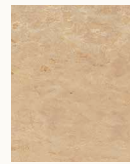
Variation will occur due
to recycled materials



Green,
Ocean OC2 Collection

**RECYCLED COFFEE SHELLS
& INDUSTRIAL PLASTIC WASTE**

Variation will occur due
to recycled materials



Coffee Waste,
Light



Coffee Waste,
Dark



Coffee Waste,
Black



Coffee Waste Green

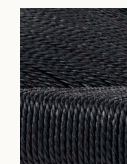
**SAWDUST
& INDUSTRIAL PLASTIC WASTE**

Variation will occur due
to recycled materials



Wood Waste,
Grey

**PAPER CORD,
FSC® CERTIFIED**



Black



Natural

CANE WORK



Natural

RECYCLED TEXTILE

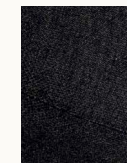
Variation will occur due
to recycled materials



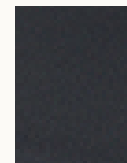
Re-wool 218,
Kvadrat



Re-wool 378,
Kvadrat



Re-wool 198,
Kvadrat



CURA,
Gabriel Fabrics

**GLASS,
BOROSILCATE**



Transparent

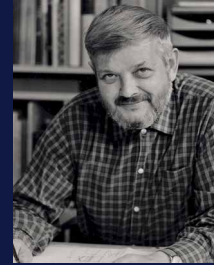


Smoked

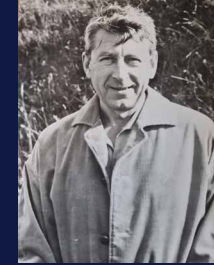


Opal white

Designers



Børge Mogensen



Esben Klint



Space Copenhagen



Eva Harlou



Jørgen & Nanna Ditzel



Ayush Kasliwal



Todd Bracher



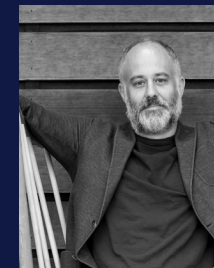
Maija Puoskari



PEDERJESSEN



Tom Stepp



Shawn Place



ARDE

Contact and info

Headquarter & Showroom

Mater A/S
Glentevej 47
DK - 2400 Copenhagen NV
Open by appointment only.

Mater Earth Gallery London
44 St. Johns Street, Clerkenwell
London EC1V 4UA
Open by appointment only.

Customer service
info@materdesign.com
+45 7026 4488

Get in touch

Nordic
Christian Ravn Knoth
Regional Director Nordics
M +45 31 77 13 91
crk@materdesign.com

Rasmus Wester
Wholesale manager, Denmark
rwe@materdesign.com
M +45 28557899

Henrik Eriksson
Country Manager Sweden & Finland
her@materdesign.com
M +46 766 07 06 88

Germany
sylke@materdesign.com
+49 (0) 1724590220

UK
Managing Director UK & Ireland
Brian Lundholm
blu@materdesign.com
+44 0773 993 3669

Lee Francis
Retail Sales Manager
lfr@materdesign.com
M +44 07305068453

Heather McCrory
Contract Sales Manager
hmc@materdesign.com
M +44 07703325537

Export
Christian Erichsen
Chief Sales Officer
cer@materdesign.com
M +45 30 32 13 77

Global

Trille Vig
Global Account Director
tvi@materdesign.com
M + 45 27120894

Learn more

Newsletter
Please sign up at our webpage:
www.materdesign.com

Instagram
@materdesign

Thanks to

A:gain / Carlsberg
Arla Foods
Maalbar
Albis Plastic
Tetra Pak
Re-match Herning
BS Steel / Trioline
BKI Coffee
Grohe
Plastix
Letbek
Martin Munkebo
Aage Vestergaard Larsen
Kvist Industries
Kvadrat textiles
Gabriel textiles
FSC Denmark

